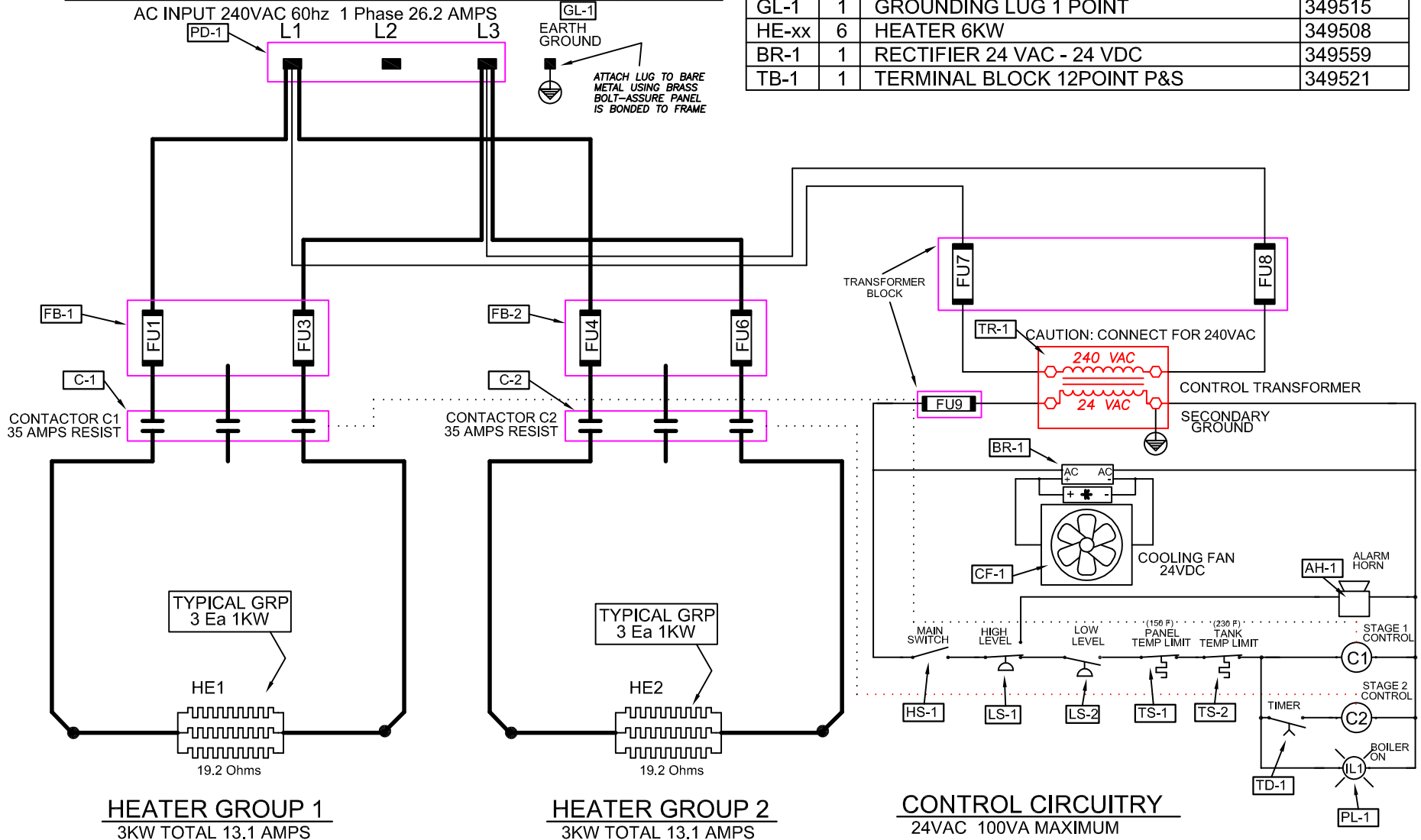


6KW-240V-1Ø

DWG TAG	COMPONENT DESCRIPTION	P/N
C-1	CONTACTOR 3P 600V 35 AMP	349552
C-2	CONTACTOR 3P 600V 35 AMP	349552
CF-1	PANEL FAN 88 CFM 24V DC	349561
FB-1	FUSE BLOCK 600V 30A 3P	349532
FB-2	FUSE BLOCK 600V 30A 3P	349532
FU1..3	FUSE 15A 600V	349572
FU4..6	FUSE 15A 600V	349572
FU7..8	FUSE 1A 600V PRIMARY	349569
FU9	FUSE 5 AMP 250V SECONDARY	349564

DWG TAG	COMPONENT DESCRIPTION	P/N
HS-1	SWITCH 2 POS. MAINT C/H	349504
LS-1	FLOAT SWITCH SPDT H. TEMP	349525
LS-2	FLOAT SWITCH SPDT H. TEMP	349525
PD-1	POWER DISTRUB BLOCK 3 POLE 600V	349514
PL-1	PILOT LAMP 24V RED 5/8	349543
TS-1	SWITCH THERM 150 DEG F	349545
TS-2	THERMOSTAT TEV50006 235	349544
TD-1	TIME RELAY 6S-8M24-240V	349535
TR-1	TRANSFORMER 100VA 240/480/24	349566
AH-1	ELECTRIC HORN 24 VAC UL LI	349506
GL-1	GROUNDING LUG 1 POINT	349515
HE-xx	HEATER 6KW	349508
BR-1	RECTIFIER 24 VAC - 24 VDC	349559
TB-1	TERMINAL BLOCK 12POINT P&S	349521

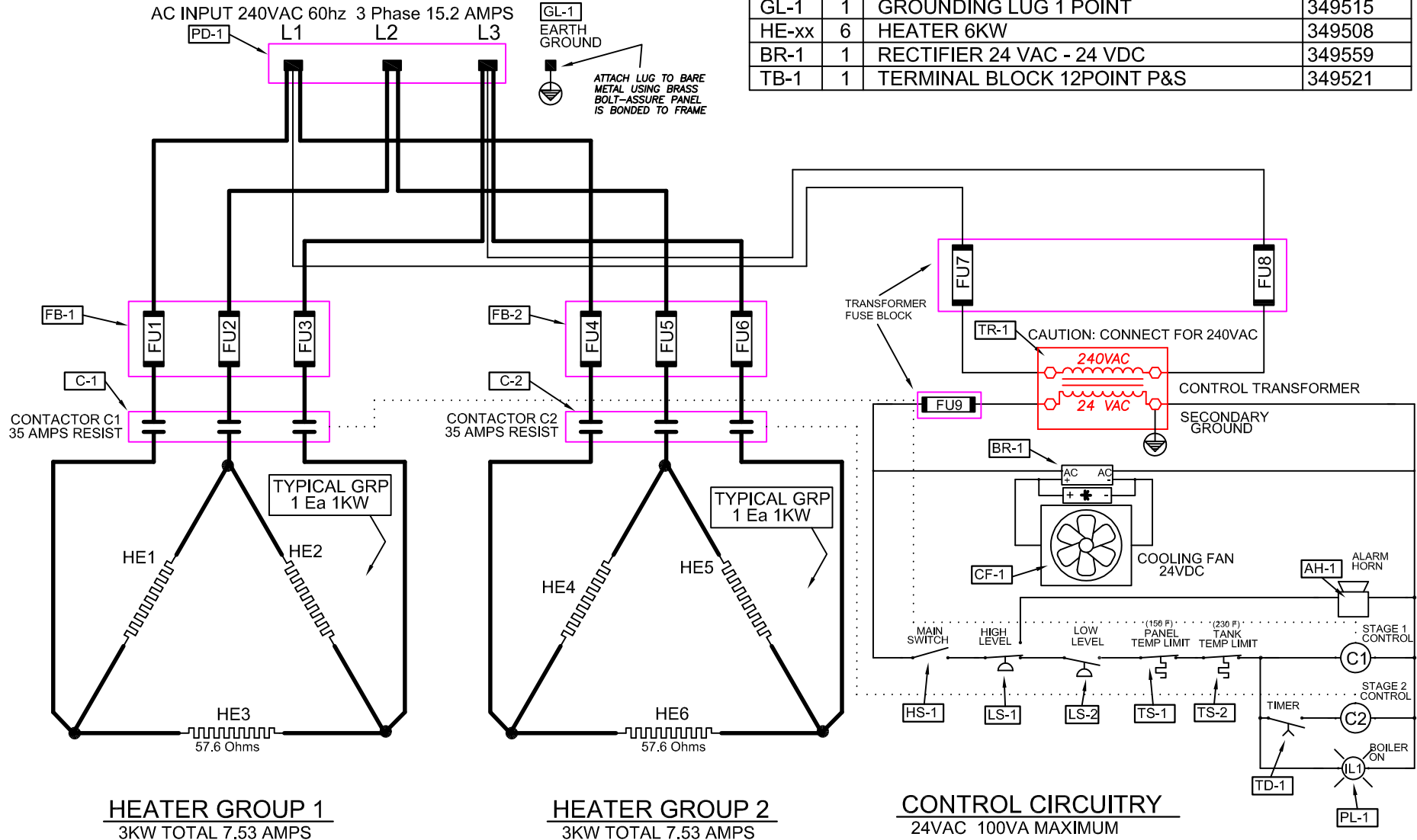


LAST REVISED 3 FEBRUARY 2020

6KW-240V-3Ø

DWG TAG		COMPONENT DESCRIPTION	P/N
C-1	1	CONTACTOR 3P 600V 35 AMP	349552
C-2	1	CONTACTOR 3P 600V 35 AMP	349552
CF-1	1	PANEL FAN 88 CFM 24V DC	349561
FB-1	1	FUSE BLOCK 600V 30A 3P	349532
FB-2	1	FUSE BLOCK 600V 30A 3P	349532
FU1..3	3	FUSE 10A 600V	349571
FU4..6	3	FUSE 10A 600V	349571
FU7..8	2	FUSE 1A 600V PRIMARY	349569
FU9	1	FUSE 5 AMP 250VAC SECONDARY	349564

DWG TAG		COMPONENT DESCRIPTION	P/N
HS-1	1	SWITCH 2 POS. MAINT C/H	349504
LS-1	1	FLOAT SWITCH SPDT H. TEMP	349525
LS-2	1	FLOAT SWITCH SPDT H. TEMP	349525
PD-1	1	POWER DISTRUB BLOCK 3 POLE 600V	349514
PL-1	1	PILOT LAMP 24V RED 5/8	349543
TS-1	1	SWITCH THERM 150 DEG F	349545
TS-2	1	THERMOSTAT TEV50006 235	349544
TD-1	1	TIME RELAY 6S-8M24-240V	349535
TR-1	1	TRANSFORMER 100VA 240/480/24	349566
AH-1	1	ELECTRIC HORN 24 VAC UL LI	349506
GL-1	1	GROUNDING LUG 1 POINT	349515
HE-xx	6	HEATER 6KW	349508
BR-1	1	RECTIFIER 24 VAC - 24 VDC	349559
TB-1	1	TERMINAL BLOCK 12POINT P&S	349521

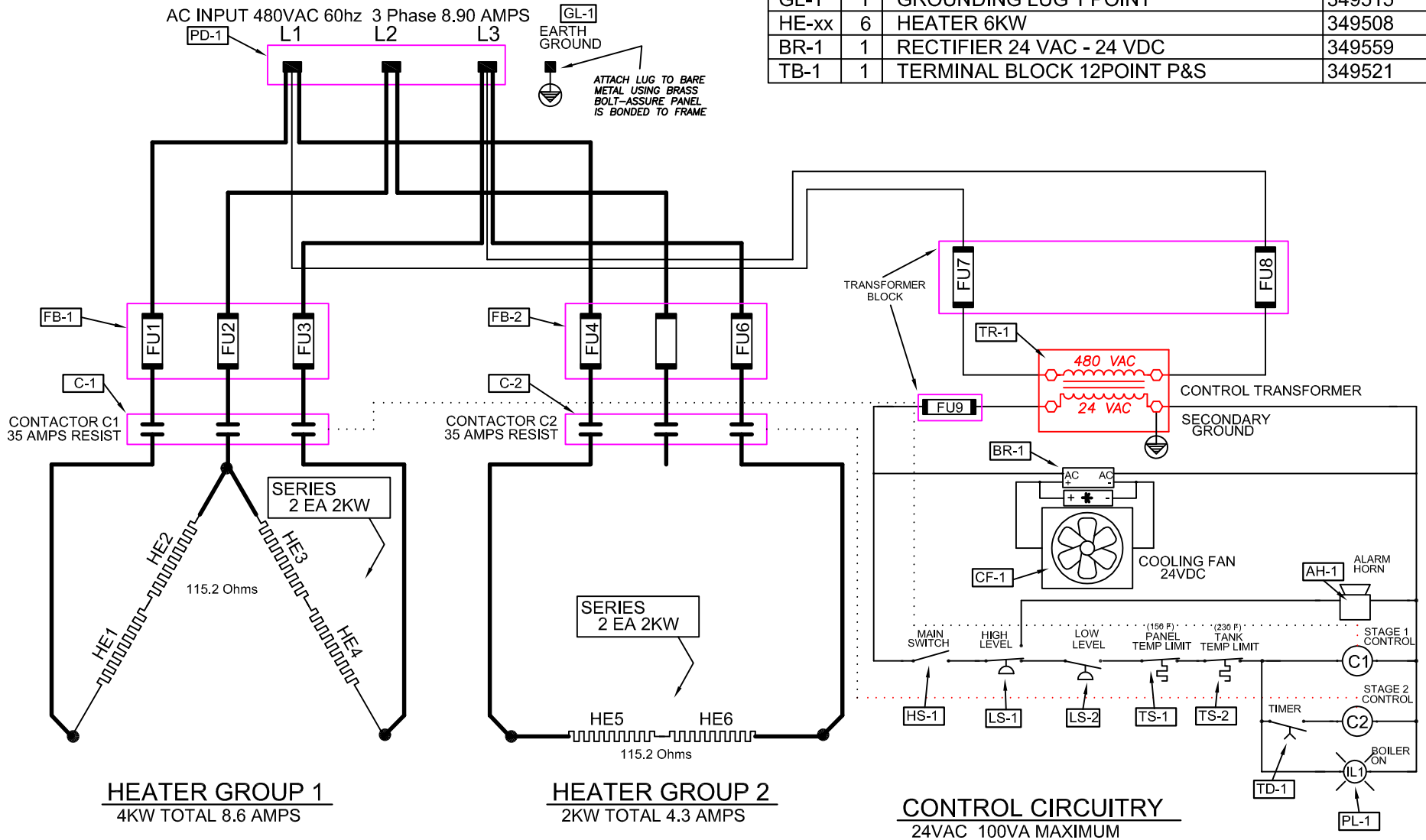


LAST REVISED 3 FEBRUARY 2020

6KW-480V-3Ø

DWG TAG	COMPONENT DESCRIPTION	P/N
C-1	CONTACTOR 24VAC 3-POLE 30	349552
C-2	CONTACTOR 24VAC 3-POLE 30	349552
CF-1	PANEL FAN 88 CFM 24V DC	349561
FB-1	FUSE BLOCK 600V 30A 3P	349532
FB-2	FUSE BLOCK 600V 30A 3P	349532
FU1..3	FUSE 10A 600V	349571
FU4..6	FUSE 7.5A 600V	349570
FU7..8	FUSE 1/2A 600V PRIMARY	349563
FU9	FUSE 5 AMP 250V SECONDARY	349564

DWG TAG	COMPONENT DESCRIPTION	P/N
HS-1	SWITCH 2 POS. MAINT C/H	349504
LS-1	FLOAT SWITCH SPDT H. TEMP	349525
LS-2	FLOAT SWITCH SPDT H. TEMP	349525
PD-1	POWER DISTRUB BLOCK 3 POLE 600V	349514
PL-1	PILOT LAMP 24V RED 5/8	349543
TS-1	SWITCH THERM 150 DEG F	349545
TS-2	THERMOSTAT TEV50006 235	349544
TD-1	TIME RELAY 6S-8M24-240V	349535
TR-1	TRANSFORMER 100VA 240/480/24	349566
AH-1	ELECTRIC HORN 24 VAC UL LI	349506
GL-1	GROUNDING LUG 1 POINT	349515
HE-xx	HEATER 6KW	349508
BR-1	RECTIFIER 24 VAC - 24 VDC	349559
TB-1	TERMINAL BLOCK 12POINT P&S	349521

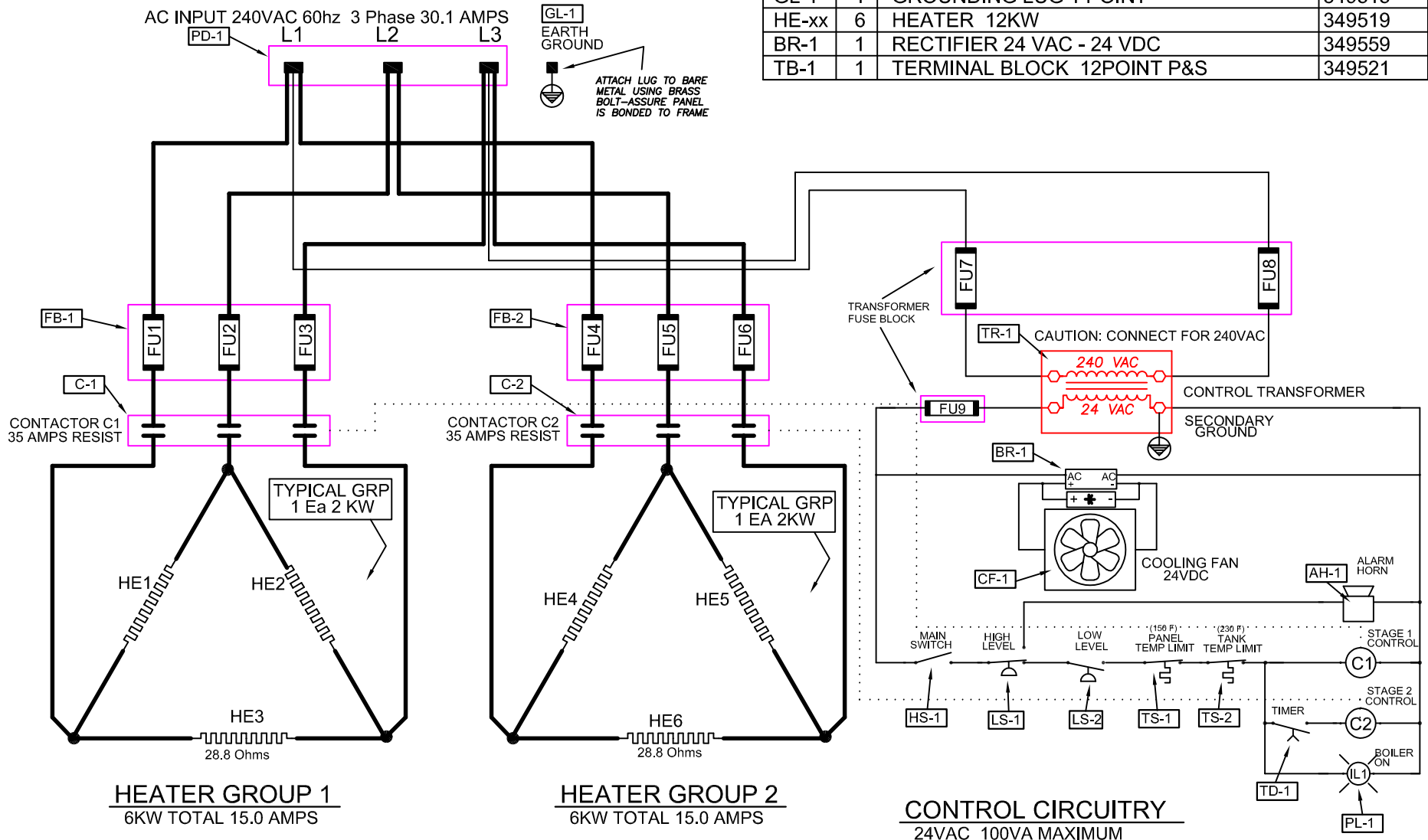


LAST REVISED 3 FEBRUARY 2020

12KW-240V-3Ø

DWG TAG	COMPONENT DESCRIPTION	P/N
C-1	1 CONTACTOR 24VAC 3-POLE 30	349552
C-2	1 CONTACTOR 24VAC 3-POLE 30	349552
CF-1	1 PANEL FAN 88 CFM 24V DC	349561
FB-1	1 FUSE BLOCK 600V 30A 3P	349532
FB-2	1 FUSE BLOCK 600V 30A 3P	349532
FU1..3	3 FUSE 20A 600V	349573
FU4..6	3 FUSE 20A 600V	349573
FU7..8	2 FUSE 1A 600V PRIMARY	349569
FU9	1 FUSE 5 AMP 250V SECONDARY	349564

DWG TAG	COMPONENT DESCRIPTION	P/N
HS-1	1 SWITCH 2 POS. MAINT C/H	349504
LS-1	1 FLOAT SWITCH SPDT H. TEMP	349525
LS-2	1 FLOAT SWITCH SPDT H. TEMP	349525
PD-1	1 POWER DISTRUB BLOCK 3 POLE 600V	349514
PL-1	1 PILOT LAMP 24V RED 5/8	349543
TS-1	1 SWITCH THERM 150 DEG F	349545
TS-2	1 THERMOSTAT TEV50006 235	349544
TD-1	1 TIME RELAY 6S-8M24-240V	349535
TR-1	1 TRANSFORMER 100VA 240/480/24	349566
AH-1	1 ELECTRIC HORN 24 VAC UL LI	349506
GL-1	1 GROUNDING LUG 1 POINT	349515
HE-xx	6 HEATER 12KW	349519
BR-1	1 RECTIFIER 24 VAC - 24 VDC	349559
TB-1	1 TERMINAL BLOCK 12POINT P&S	349521

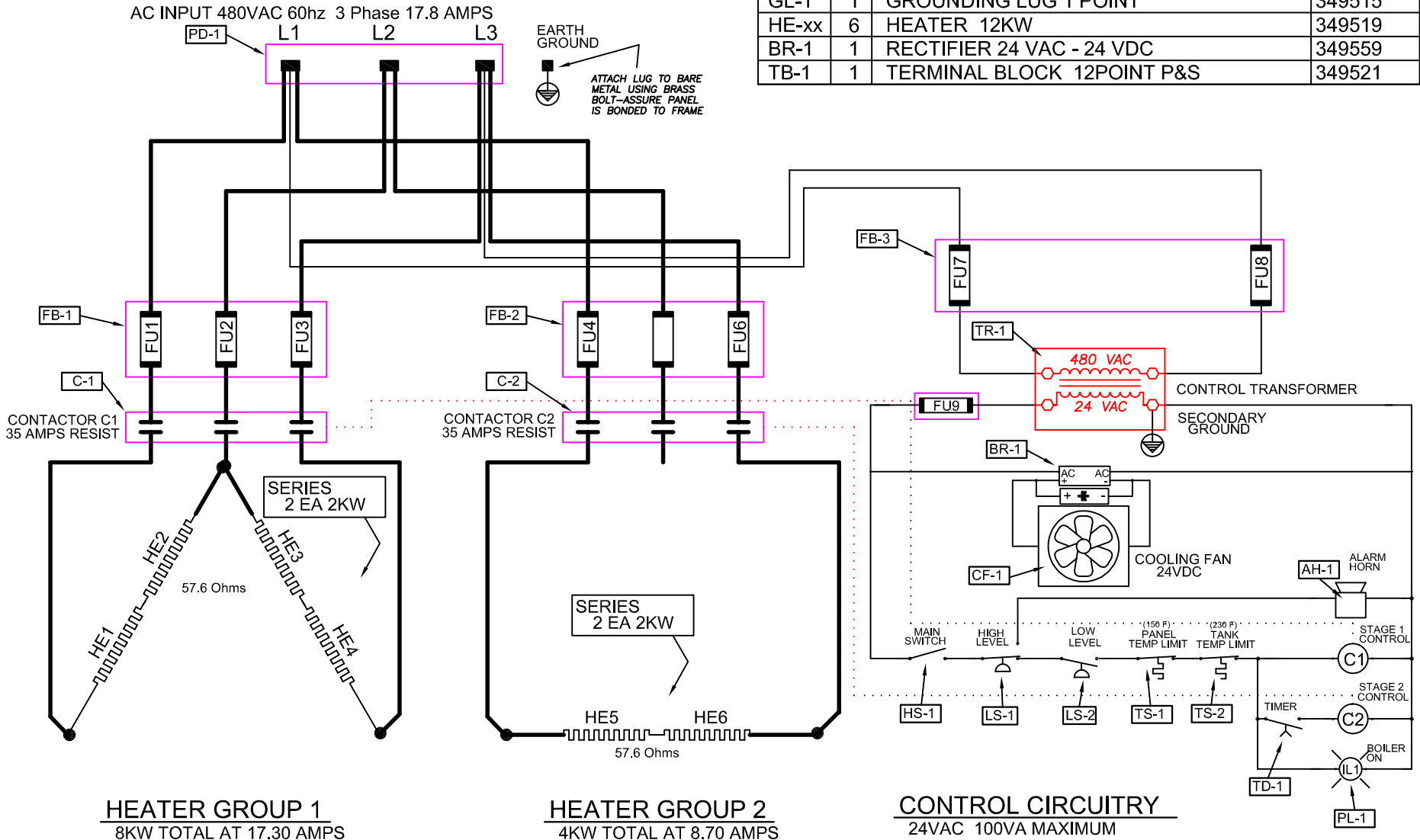


LAST REVISED 3 FEBRUARY 2020

12KW-480V-3Ø

DWG TAG	COMPONENT DESCRIPTION	P/N
C-1	CONTACTOR 24VAC 3-POLE 30	349552
C-2	CONTACTOR 24VAC 3-POLE 30	349552
CF-1	PANEL FAN 88 CFM 24V DC	349561
FB-1	FUSE BLOCK 600V 30A 3P	349532
FB-2	FUSE BLOCK 600V 30A 3P	349532
FU1..3	FUSE 20A 600V	349573
FU4..6	FUSE 10A 600V	349571
FU7..8	FUSE 1/2A 600V PRIMARY	349563
FU9	FUSE 5 AMP 250V SECONDARY	349564

DWG TAG	COMPONENT DESCRIPTION	P/N
HS-1	SWITCH 2 POS. MAINT C/H	349504
LS-1	FLOAT SWITCH SPDT H. TEMP	349525
LS-2	FLOAT SWITCH SPDT H. TEMP	349525
PD-1	POWER DISTRUB BLOCK 3 POLE 600V	349514
PL-1	PILOT LAMP 24V RED 5/8	349543
TS-1	SWITCH THERM 150 DEG F	349545
TS-2	THERMOSTAT TEV50006 235	349544
TD-1	TIME RELAY 6S-8M24-240V	349535
TR-1	TRANSFORMER 100VA 240/480/24	349566
AH-1	ELECTRIC HORN 24 VAC UL LI	349506
GL-1	GROUNDING LUG 1 POINT	349515
HE-xx	HEATER 12KW	349519
BR-1	RECTIFIER 24 VAC - 24 VDC	349559
TB-1	TERMINAL BLOCK 12POINT P&S	349521

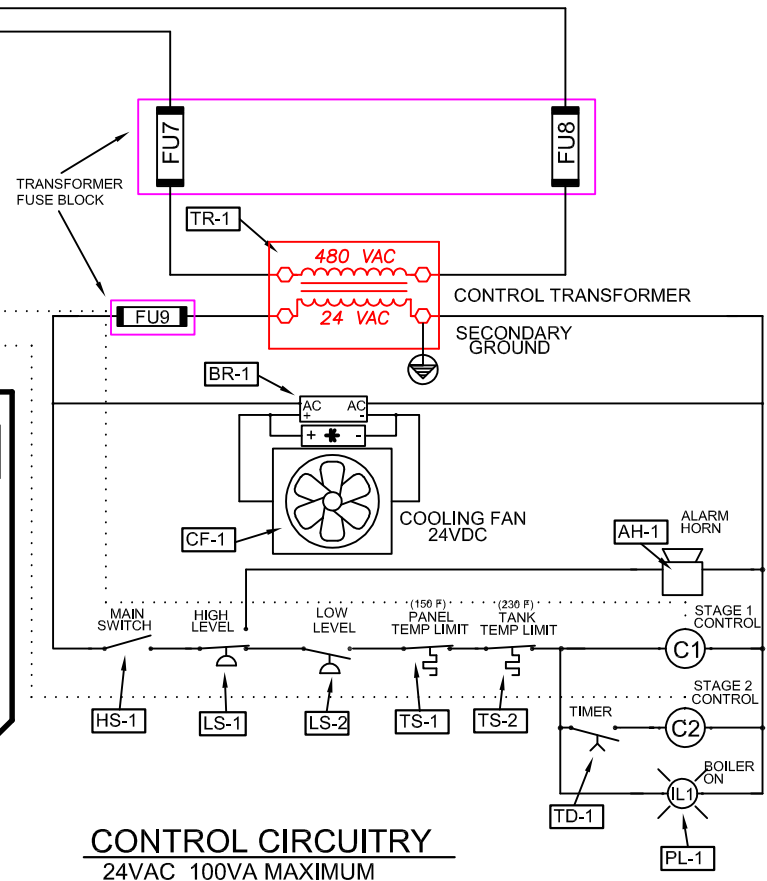
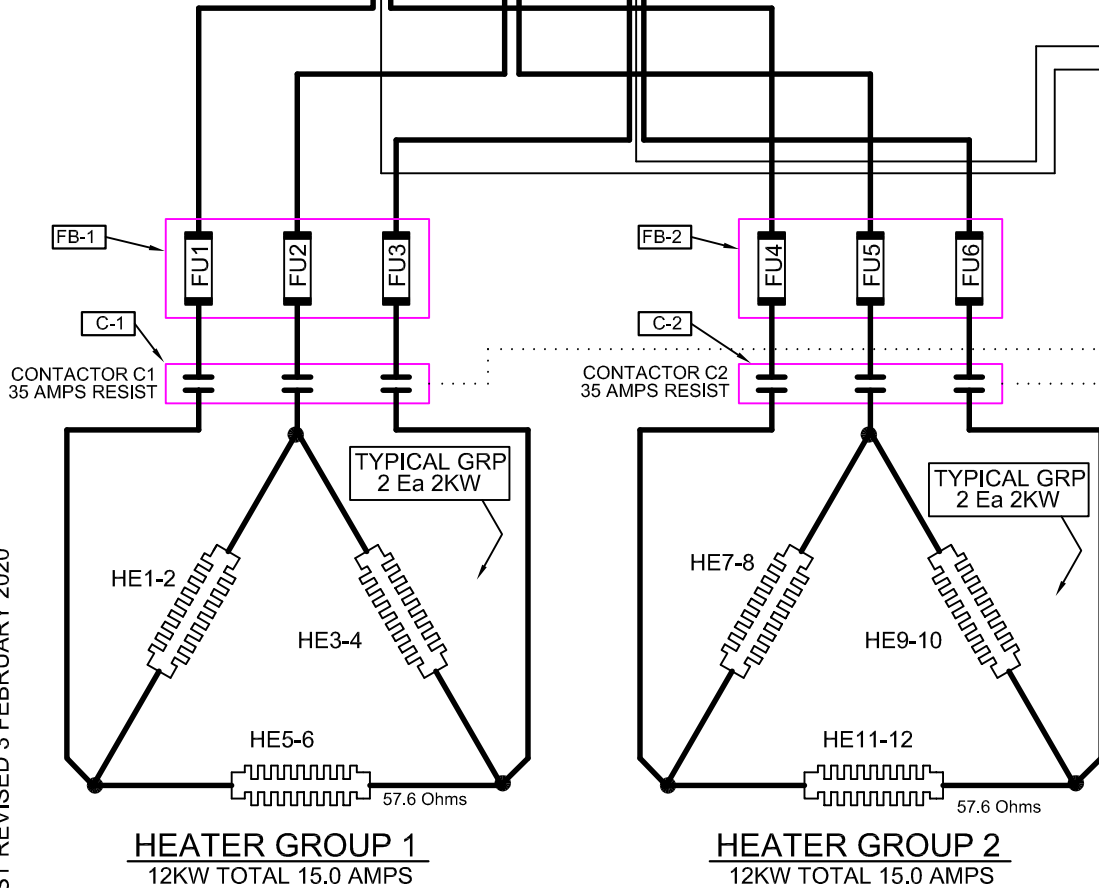
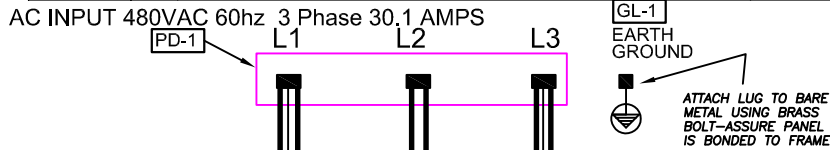


LAST REVISED 3 FEBRUARY 2020

24KW-480V-3Ø

DWG TAG	COMPONENT DESCRIPTION	P/N
C-1	CONTACTOR 24VAC 3-POLE 30	349552
C-2	CONTACTOR 24VAC 3-POLE 30	349552
CF-1	PANEL FAN 88 CFM 24V DC	349561
FB-1	FUSE BLOCK 600V 30A 3P	349532
FB-2	FUSE BLOCK 600V 30A 3P	349532
FU1..3	FUSE 20A 600V	349573
FU4..6	FUSE 20A 600V	349573
FU7..8	FUSE 1/2A 600V PRIMARY	349563
FU9	FUSE 5 AMP 250V SECONDARY	349564

DWG TAG	COMPONENT DESCRIPTION	P/N
HS-1	SWITCH 2 POS. MAINT C/H	349504
LS-1	FLOAT SWITCH SPDT H. TEMP	349525
LS-2	FLOAT SWITCH SPDT H. TEMP	349525
PD-1	POWER DISTRUB BLOCK 3 POLE 600V	349514
PL-1	PILOT LAMP 24V RED 5/8	349543
TS-1	SWITCH THERM 150 DEG F	349545
TS-2	THERMOSTAT TEV50006 235	349544
TD-1	TIME RELAY 6S-8M24-240V	349535
TR-1	TRANSFORMER 100VA 240/480/24	349566
AH-1	ELECTRIC HORN 24 VAC UL LI	349506
GL-1	GROUNDING LUG 1 POINT	349515
HE-xx	HEATER 24KW	349531
BR-1	RECTIFIER 24 VAC - 24 VDC	349559
TB-1	TERMINAL BLOCK 12POINT P&S	349521

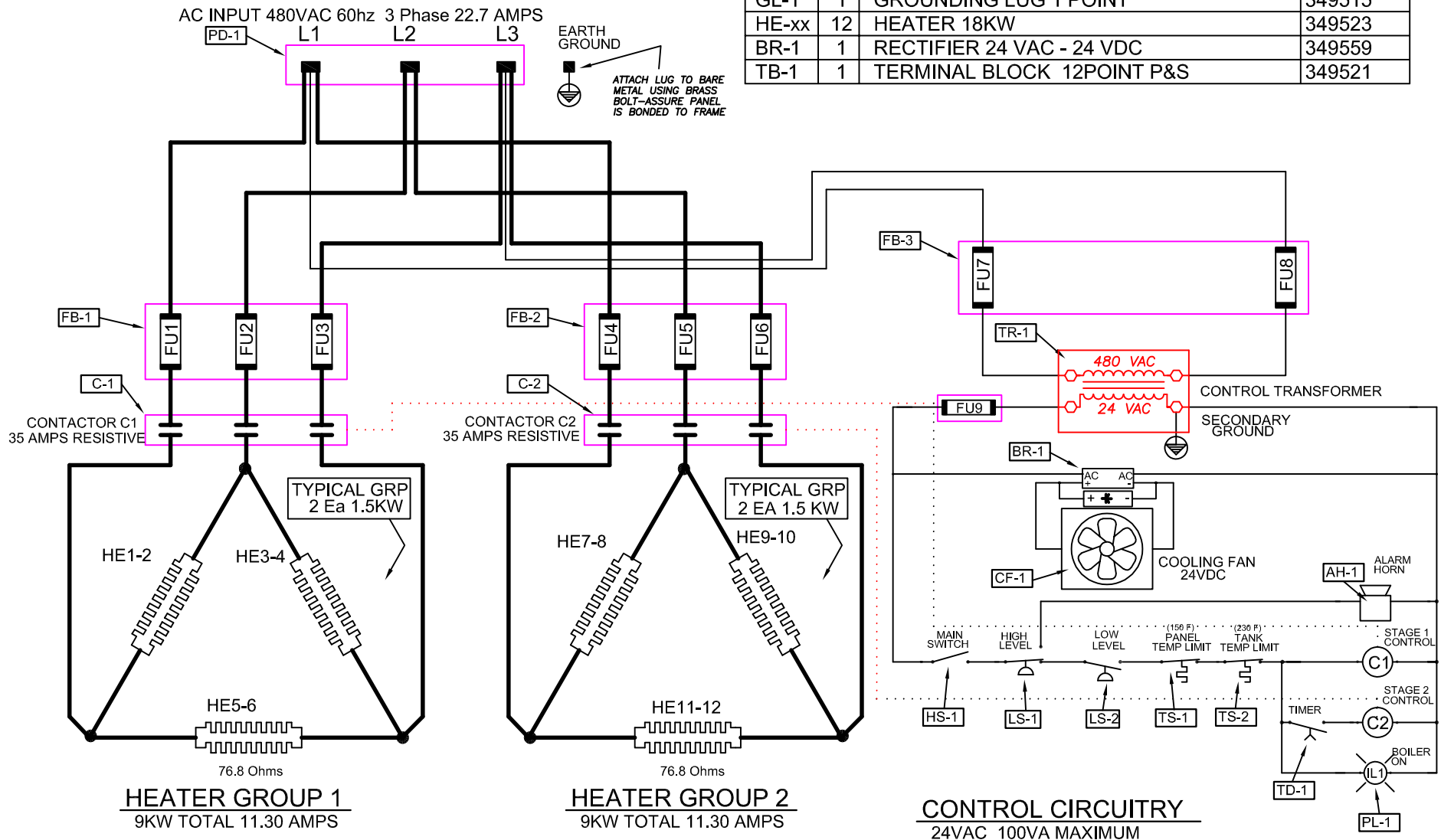


LAST REVISED 3 FEBRUARY 2020

18KW-480V-3Ø

DWG TAG		COMPONENT DESCRIPTION	P/N
C-1	1	CONTACTOR 24VAC 3-POLE 30	349552
C-2	1	CONTACTOR 24VAC 3-POLE 30	349552
CF-1	1	PANEL FAN 88 CFM 24V DC	349561
FB-1	1	FUSE BLOCK 600V 30A 3P	349532
FB-2	1	FUSE BLOCK 600V 30A 3P	349532
FU1..3	3	FUSE 15A 600V	349572
FU4..6	3	FUSE 15A 600V	349572
FU7..8	2	FUSE 1/2A 600V PRIMARY	349563
FU9	1	FUSE 5 AMP 250V SECONDARY	349564

DWG TAG		COMPONENT DESCRIPTION	P/N
HS-1	1	SWITCH 2 POS. MAINT C/H	349504
LS-1	1	FLOAT SWITCH SPDT H. TEMP	349525
LS-2	1	FLOAT SWITCH SPDT H. TEMP	349525
PD-1	1	POWER DISTRUB BLOCK 3 POLE 600V	349514
PL-1	1	PILOT LAMP 24V RED 5/8	349543
TS-1	1	SWITCH THERM 150 DEG F	349545
TS-2	1	THERMOSTAT TEV50006 235	349544
TD-1	1	TIME RELAY 6S-8M24-240V	349535
TR-1	1	TRANSFORMER 100VA 240/480/24	349566
AH-1	1	ELECTRIC HORN 24 VAC UL LI	349506
GL-1	1	GROUNDING LUG 1 POINT	349515
HE-xx	12	HEATER 18KW	349523
BR-1	1	RECTIFIER 24 VAC - 24 VDC	349559
TB-1	1	TERMINAL BLOCK 12POINT P&S	349521

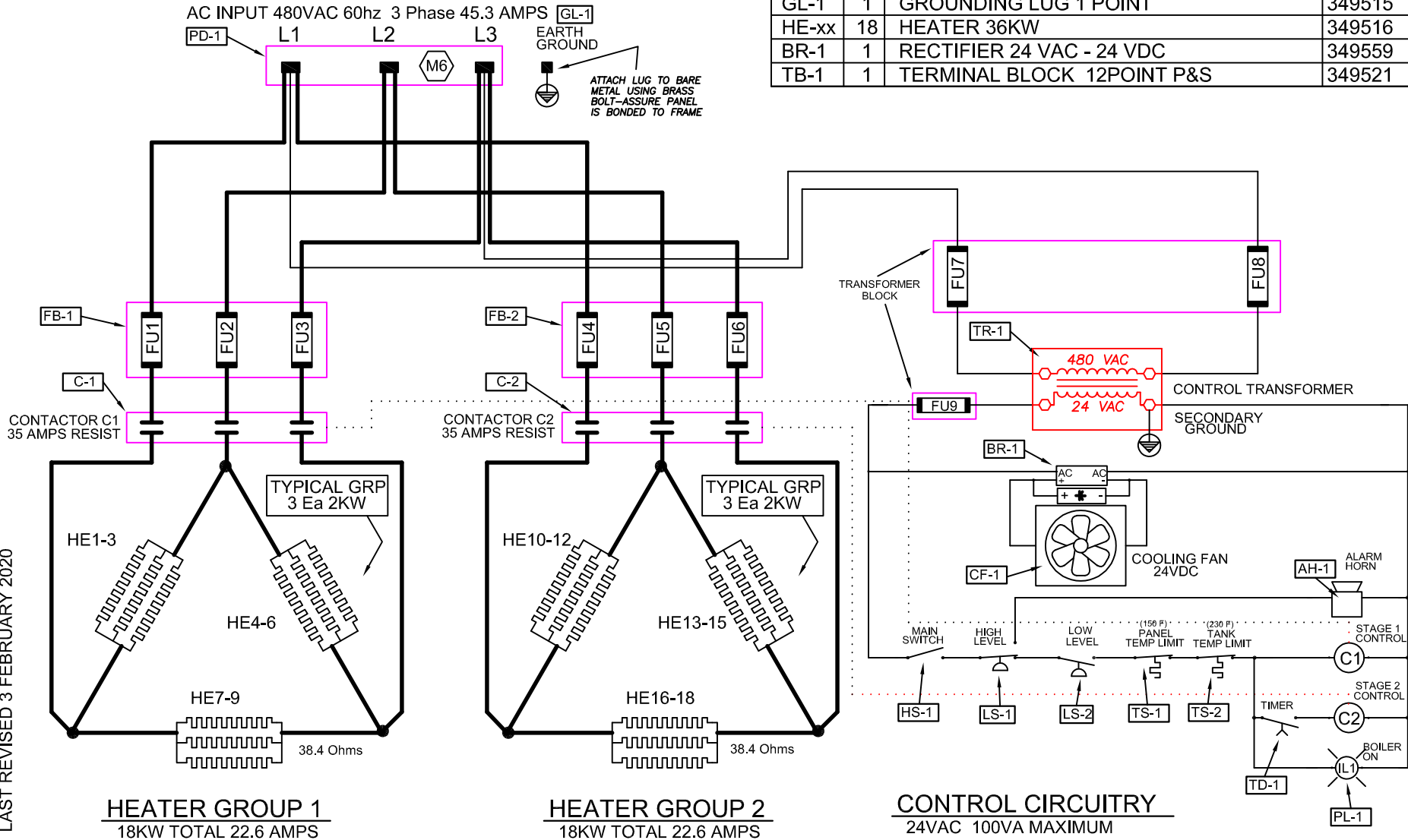


LAST REVISED 3 FEBRUARY 2020

36KW-480V-3Ø

DWG TAG		COMPONENT DESCRIPTION	P/N
C-1	1	CONTACTOR 24VAC 3-POLE 30	349552
C-2	1	CONTACTOR 24VAC 3-POLE 30	349552
CF-1	1	PANEL FAN 88 CFM 24V DC	349561
FB-1	1	FUSE BLOCK 600V 30A 3P	349532
FB-2	1	FUSE BLOCK 600V 30A 3P	349532
FU1..3	3	FUSE 30A 600V	349501
FU4..6	3	FUSE 30A 600V	349501
FU7..8	2	FUSE 1/2A 600V PRIMARY	349563
FU9	1	FUSE 5 AMP 250V SECONDARY	349564

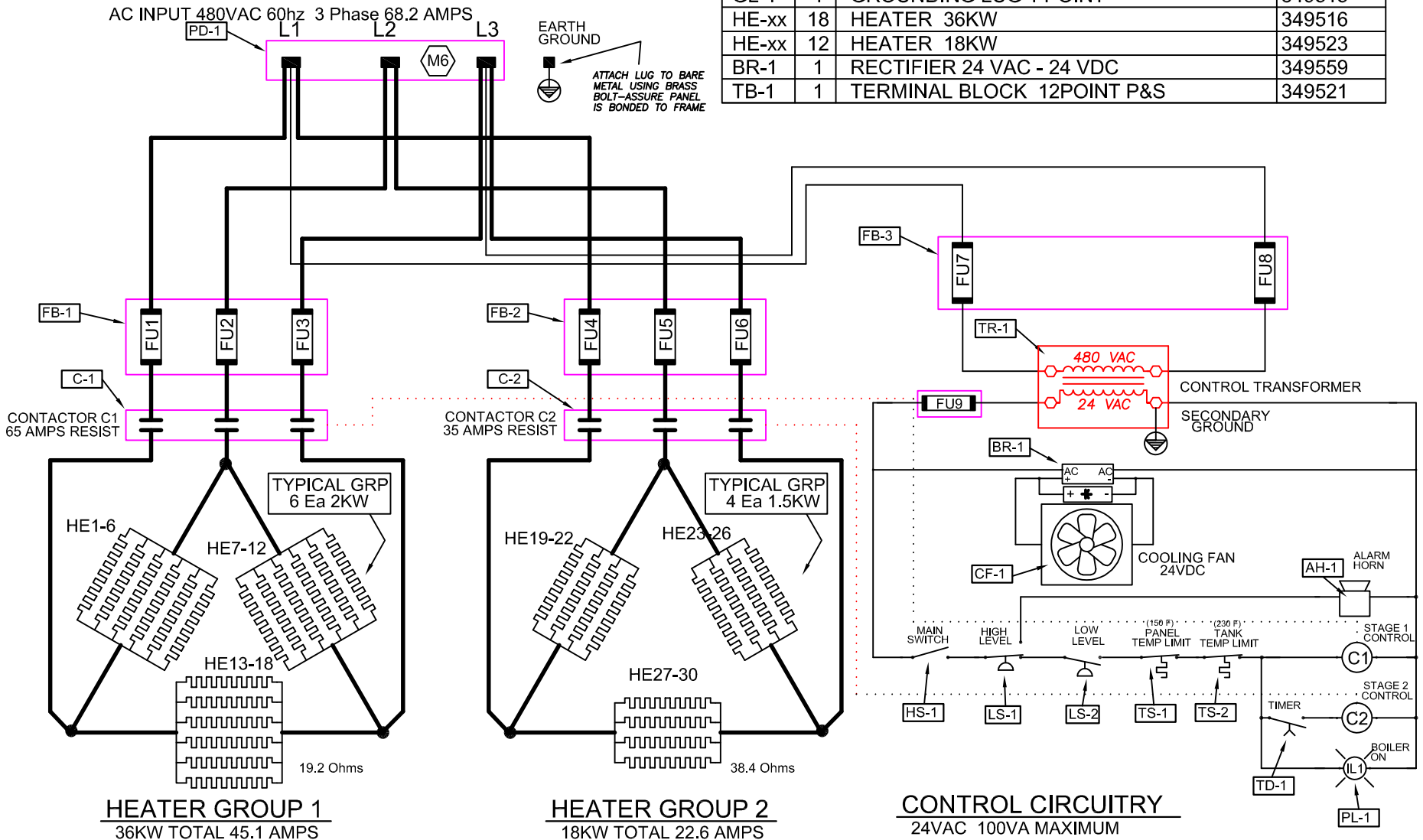
DWG TAG		COMPONENT DESCRIPTION	P/N
HS-1	1	SWITCH 2 POS. MAINT C/H	349504
LS-1	1	FLOAT SWITCH SPDT H. TEMP	349525
LS-2	1	FLOAT SWITCH SPDT H. TEMP	349525
PD-1	1	POWER DISTRUB BLOCK 3 POLE 600V	349514
PL-1	1	PILOT LAMP 24V RED 5/8	349543
TS-1	1	SWITCH THERM 150 DEG F	349545
TS-2	1	THERMOSTAT TEV50006 235	349544
TD-1	1	TIME RELAY 6S-8M24-240V	349535
TR-1	1	TRANSFORMER 100VA 240/480/24	349566
AH-1	1	ELECTRIC HORN 24 VAC UL LI	349506
GL-1	1	GROUNDING LUG 1 POINT	349515
HE-xx	18	HEATER 36KW	349516
BR-1	1	RECTIFIER 24 VAC - 24 VDC	349559
TB-1	1	TERMINAL BLOCK 12POINT P&S	349521



54KW-480V-3Ø

DWG TAG	COMPONENT DESCRIPTION	P/N
C-1	1 CONTACTOR 24VAC 50AMP	349558
C-2	1 CONTACTOR 24VAC 3-POLE 30	349552
CF-1	1 PANEL FAN 88 CFM 24V DC	349561
FB-1	1 FUSE 60 AMP FUSE BLOCK	349502
FB-2	1 FUSE 60 AMP FUSE BLOCK	349502
FU1..3	3 FUSE 60A 600V FAST	349539
FU4..6	3 FUSE 35A 600V CLASS T	349562
FU7..8	2 FUSE 1/2A 600V PRIMARY	349563
FU9	1 FUSE 5 AMP 250V SECONDARY	349564

DWG TAG	COMPONENT DESCRIPTION	P/N
HS-1	1 SWITCH 2 POS. MAINT C/H	349504
LS-1	1 FLOAT SWITCH SPDT H. TEMP	349525
LS-2	1 FLOAT SWITCH SPDT H. TEMP	349525
PD-1	1 POWER DISTRUB BLOCK 3 POLE 600V	349514
PL-1	1 PILOT LAMP 24V RED 5/8	349543
TS-1	1 SWITCH THERM 150 DEG F	349545
TS-2	1 THERMOSTAT TEV50006 235	349544
TD-1	1 TIME RELAY 6S-8M24-240V	349535
TR-1	1 TRANSFORMER 100VA 240/480/24	349566
AH-1	1 ELECTRIC HORN 24 VAC UL LI	349506
GL-1	1 GROUNDING LUG 1 POINT	349515
HE-xx	18 HEATER 36KW	349516
HE-xx	12 HEATER 18KW	349523
BR-1	1 RECTIFIER 24 VAC - 24 VDC	349559
TB-1	1 TERMINAL BLOCK 12POINT P&S	349521

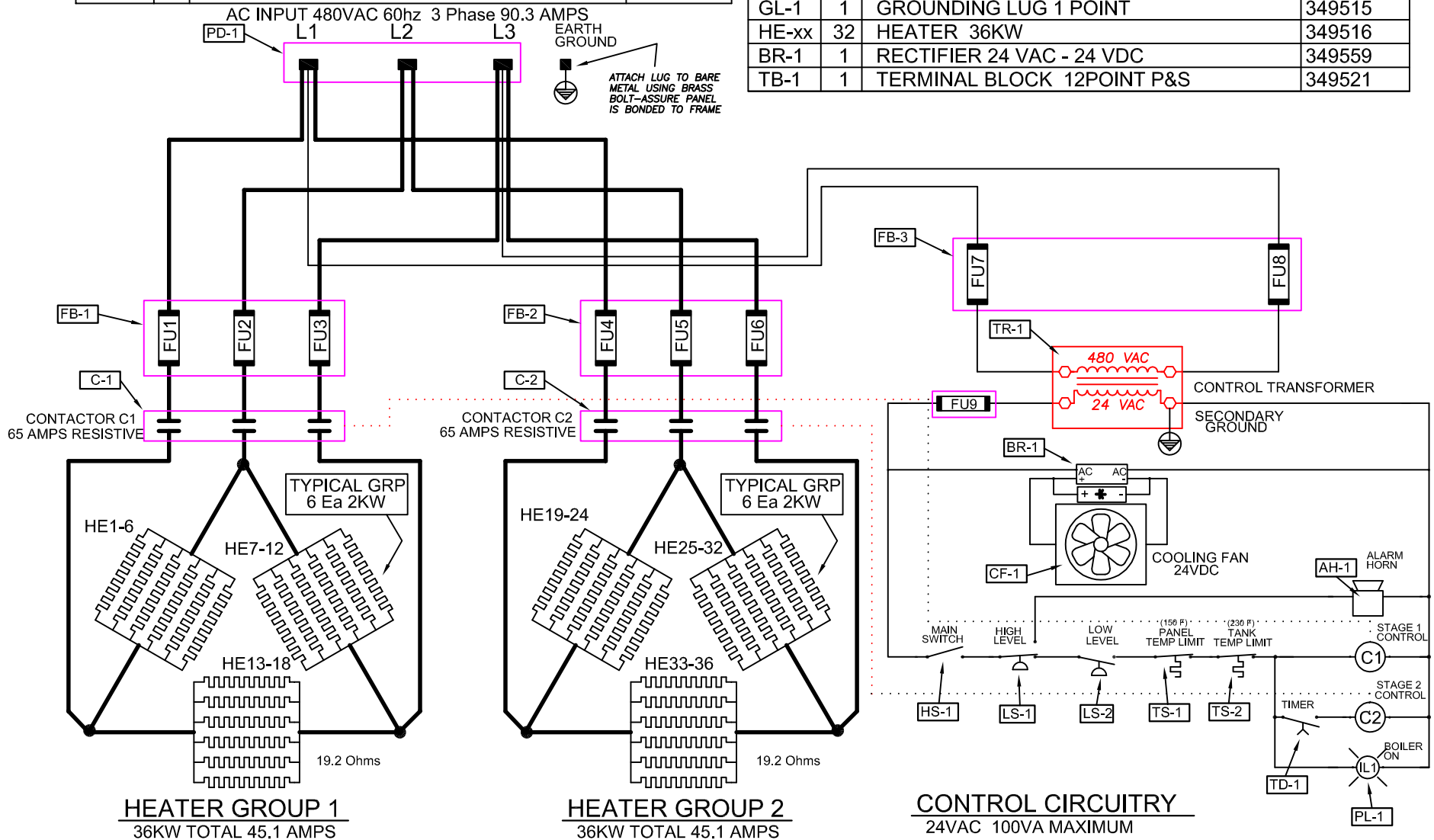


LAST REVISED 3 FEBRUARY 2020

72KW-480V-3Ø

DWG TAG	COMPONENT DESCRIPTION	P/N
C-1	1 CONTACTOR 24VAC 50AMP	349558
C-2	1 CONTACTOR 24VAC 50AMP	349558
CF-1	1 PANEL FAN 88 CFM 24V DC	349561
FB-1	1 FUSE 60 AMP FUSE BLOCK	349502
FB-2	1 FUSE 60 AMP FUSE BLOCK	349502
FU1..3	3 FUSE 60A 600V FAST	349539
FU4..6	3 FUSE 60A 600V FAST	349539
FU7..8	2 FUSE 1/2A 600V PRIMARY	349563
FU9	1 FUSE 5 AMP 250V SECONDARY	349564

DWG TAG	COMPONENT DESCRIPTION	P/N
HS-1	1 SWITCH 2 POS. MAINT C/H	349504
LS-1	1 FLOAT SWITCH SPDT H. TEMP	349525
LS-2	1 FLOAT SWITCH SPDT H. TEMP	349525
PD-1	1 POWER DISTRUB BLOCK 3 POLE 600V	349514
PL-1	1 PILOT LAMP 24V RED 5/8	349543
TS-1	1 SWITCH THERM 150 DEG F	349545
TS-2	1 THERMOSTAT TEV50006 235	349544
TD-1	1 TIME RELAY 6S-8M24-240V	349535
TR-1	1 TRANSFORMER 100VA 240/480/24	349566
AH-1	1 ELECTRIC HORN 24 VAC UL LI	349506
GL-1	1 GROUNDING LUG 1 POINT	349515
HE-xx	32 HEATER 36KW	349516
BR-1	1 RECTIFIER 24 VAC - 24 VDC	349559
TB-1	1 TERMINAL BLOCK 12POINT P&S	349521



LAST REVISED 3 FEBRUARY 2020